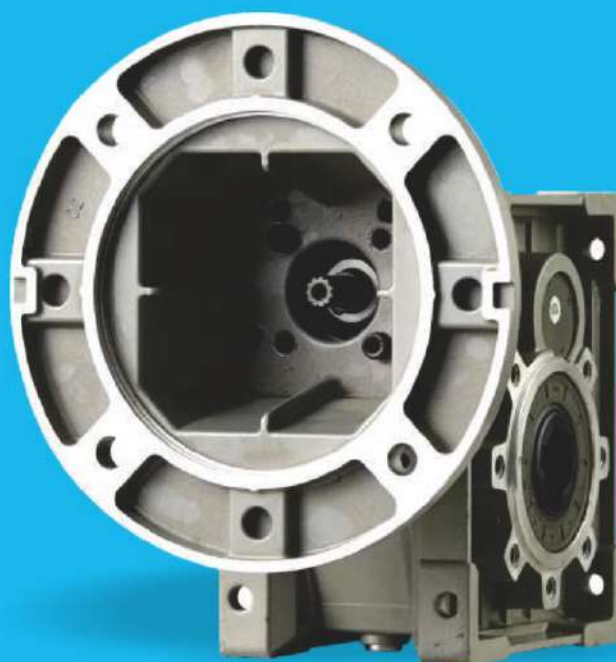
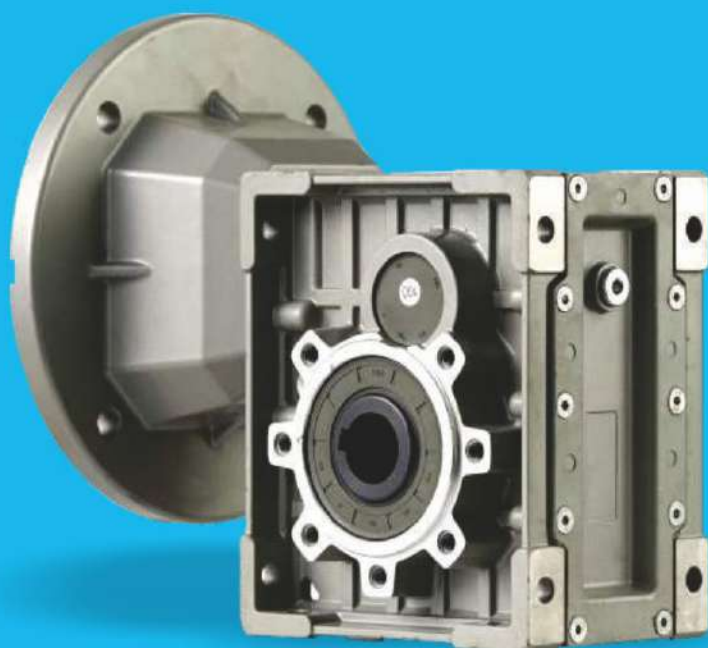




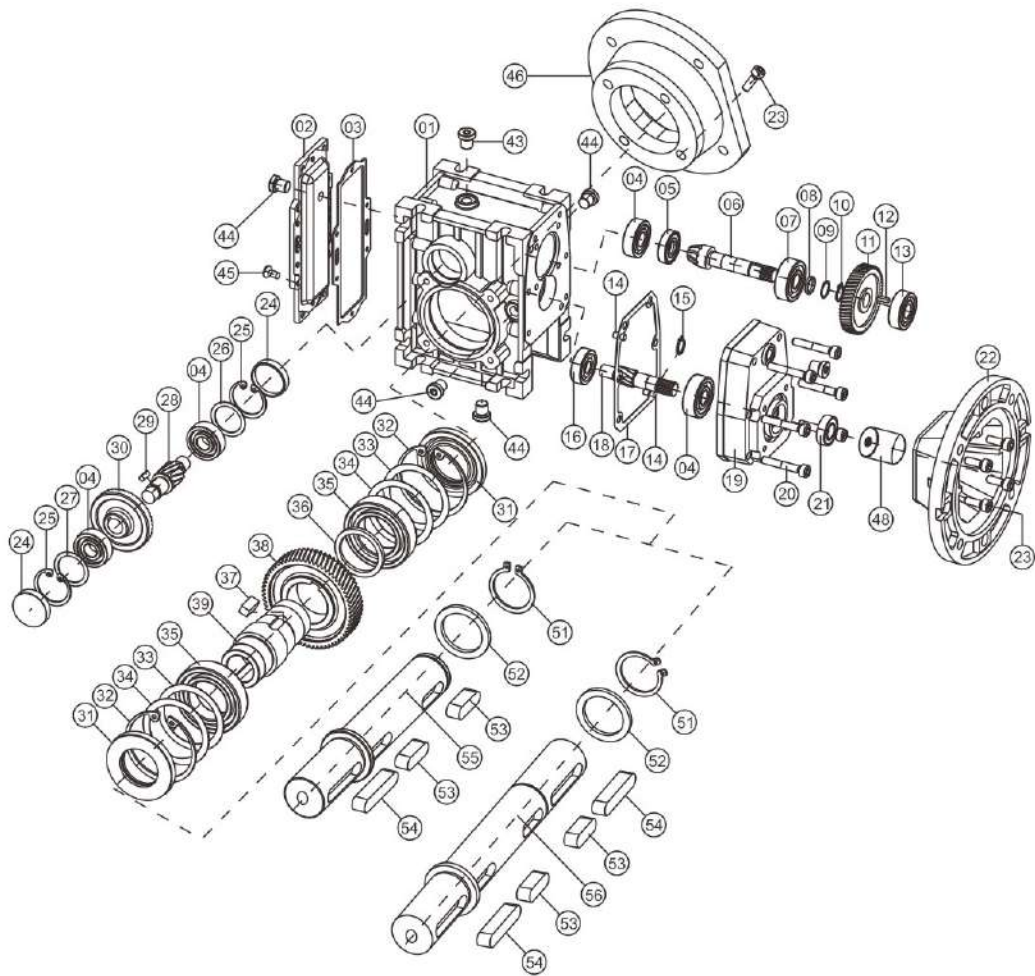
HANCO'S

HYPOID-HELICAL GEAR UNITS



HANCO reserve right to make changes to this brochure without notice

HANCO
TRANSMISSION



01	Aluminium main box	13	Bear	25	Hole Retaining Ring	37	Linchpin	55	Solid Unidirectional Shaft
02	Main case gland	14	Locating Pin	26	spread litter in a cowshed	38	Driven Gear	56	Solid Two-Way Spool
03	Gland sealing rubber gasket	15	Shaft Retaining Ring	27	Adjustment Shims	39	Hollow Output Shaft		
04	Bear	16	Bear	28	Intermediate Shaft Teeth	43	Ventilator Cap		
05	Simmerring Oil Seal	17	Sealing Paper Gasket	29	Linchpin	44	Oil Plug		
06	Quasi Hyperbolic Curved Pinion Axle	18	Input Gear Shaft	30	Quasi Hyperbolic Curved Gear Large Wheel	45	Flat Head Bolt		
07	Bear	19	Enclosure	31	Simmerring Oil Seal	46	Output Flange		
08	Spread litter in a cowshed	20	Socket Head Bolts	32	Hole Retaining Ring	48	Input Shaft Sleeve		
09	Adjustment Shims	21	Simmerring Oil Seal	33	Adjustment Shims	51	Shaft Retaining Ring		
10	Shaft Retaining Ring	22	IEC Input Methodland	34	Adjustment Shims	52	Spread Litter in a cowshed		
11	Input Slave Gear	23	Socket Head Bolts	35	Bear	53	Linchpin		
12	Linchpin	24	Oil Cap	36	Slave Gear Washers	54	Linchpin		

◆ Possible Geometrical Combinations

TKM050.. $n_1=1400\text{r/min}$

130Nm

Gear units	l Nominal	l Actual	n_2 [r/min]	$M_{2\text{max}}$ [Nm]	F_{r2} [N]	IEC 63	IEC 71	IEC 80	IEC 90
3 Stage									
TKM050C	300	298.57	4.69	130	4100				
TKM050C	250	247.99	5.65	130	4100				
TKM050C	200	200.44	6.98	130	4100				
TKM050C	150	148.89	9.40	130	4000				
TKM050C	125	120.34	11.63	100	3770				
TKM050C	100	101.04	13.86	80	3560				
TKM050C	75	74.62	18.76	130	3220				
TKM050C	60	62.36	22.45	100	3030				
TKM050C	50	52.36	26.74	110	2860				
2 Stage									
TKM050B	60	59.71	23.44	130	2900				
TKM050B	50	49.60	28.22	130	2790				
TKM050B	40	40.09	34.92	130	2610				
TKM050B	30	29.78	47.01	130	2350				
TKM050B	25	24.07	58.16	130	2200				
TKM050B	20	20.21	69.27	100	2080				
TKM050B	15	14.92	93.83	80	1880				
TKM050B	12.5	12.47	112.27	130	1770				
TKM050B	10	10.47	133.72	100	1670				
TKM050B	7.5	7.73	181.11	80	1510				

TKM063.. $n_1=1400\text{r/min}$

200Nm

Gear units	l Nominal	l Actual	n_2 [r/min]	$M_{2\text{max}}$ [Nm]	F_{r2} [N]	IEC 63	IEC 71	IEC 80	IEC 90
3 Stage									
TKM063C	300	298.57	4.69	200	4800				
TKM063C	250	242.26	5.78	200	4800				
TKM063C	200	202.04	6.93	180	4800				
TKM063C	150	150.74	9.29	200	4650				
TKM063C	125	125.71	11.14	180	4330				
TKM063C	100	99.22	14.11	150	4070				
TKM063C	75	75.66	18.50	110	3650				
TKM063C	60	65.14	21.49	180	3480				
TKM063C	50	50.14	27.77	150	3270				
2 Stage									
TKM063B	60	59.71	23.44	200	3430				
TKM063B	50	48.40	28.93	200	3190				
TKM063B	40	40.38	34.67	180	2970				
TKM063B	30	30.15	46.50	200	2720				
TKM063B	25	25.13	55.71	180	2530				
TKM063B	20	19.84	70.56	150	2380				
TKM063B	15	15.16	92.35	110	2130				
TKM063B	12.5	13.02	107.53	180	2030				
TKM063B	10	10.28	136.18	150	1910				
TKM063B	7.5	7.84	178.57	110	1710				

◆ Possible Geometrical Combinations

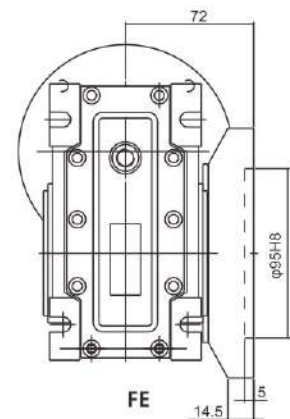
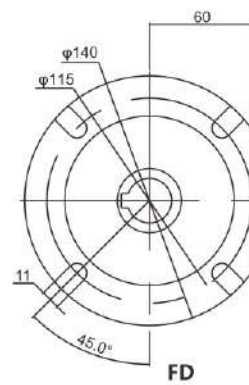
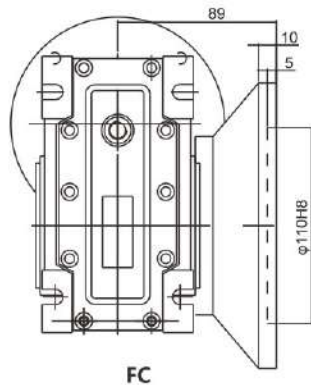
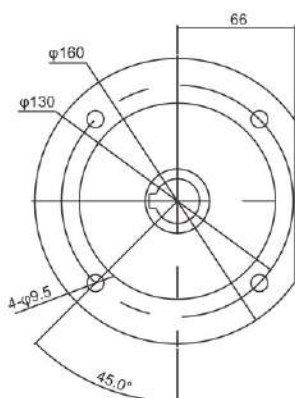
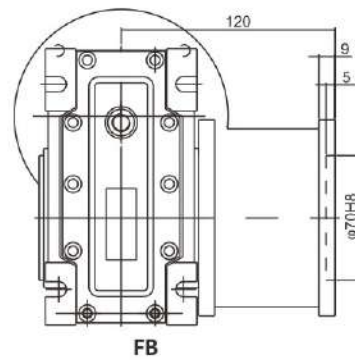
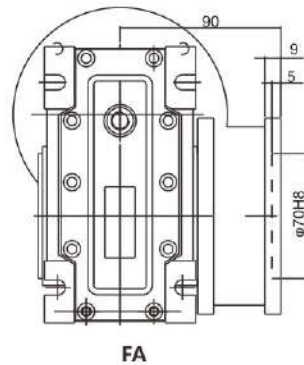
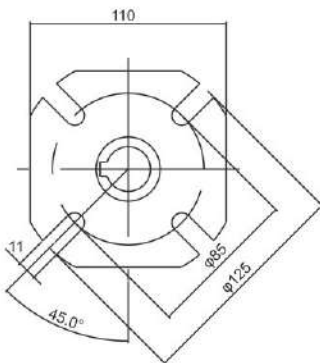
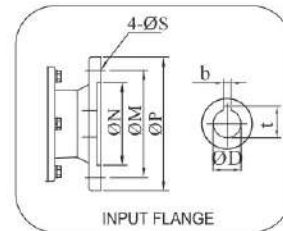
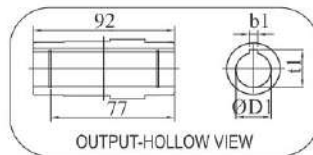
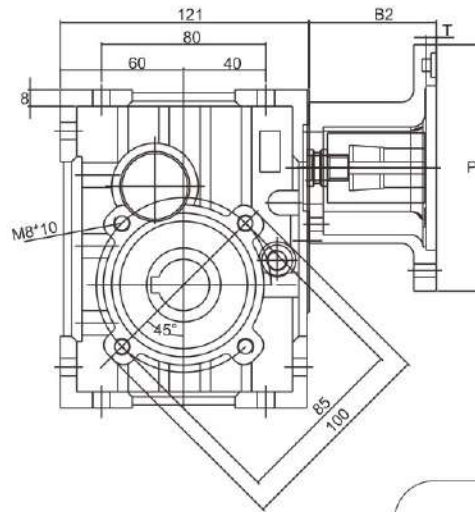
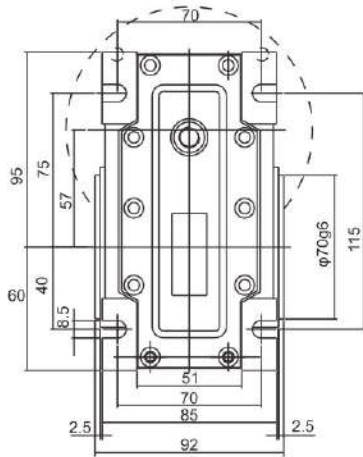
TKM075.. $n_1=1400r/min$ **350Nm**

Gear units	I Nominal	I Actual	n_2 [r/min]	M_2max [Nm]	F_{r2} [N]	IEC 63	IEC 71	IEC 80	IEC 90
3 Stage									
TKM075C	300	297.21	4.71	350	6500				
TKM075C	250	241.03	5.80	350	6500				
TKM075C	200	200.73	6.97	300	6500				
TKM075C	150	149.29	9.38	350	6500				
TKM075C	125	121.07	11.56	300	5980				
TKM075C	100	100.62	13.91	240	5520				
TKM075C	75	79.35	17.64	200	5040				
TKM075C	60	62.44	22.42	300	4730				
TKM075C	50	49.14	28.49	240	4370				
2 Stage									
TKM075B	60	59.44	23.55	350	4660				
TKM075B	50	48.21	29.03	350	4340				
TKM075B	40	40.15	34.87	300	4080				
TKM075B	30	29.86	46.88	350	3720				
TKM075B	25	24.21	57.83	300	3500				
TKM075B	20	20.12	69.58	240	3230				
TKM075B	15	15.87	88.21	200	2950				
TKM075B	12.5	12.49	112.09	300	2770				
TKM075B	10	9.83	142.42	240	2550				
TKM075B	7.5	7.47	187.42	200	2330				

TKM090.. $n_1=1400r/min$ **500Nm**

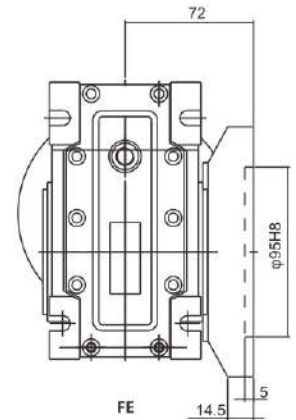
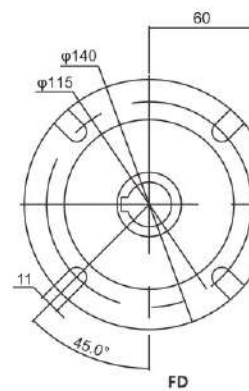
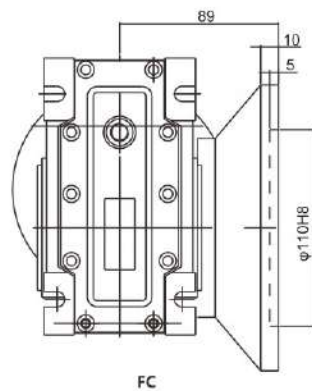
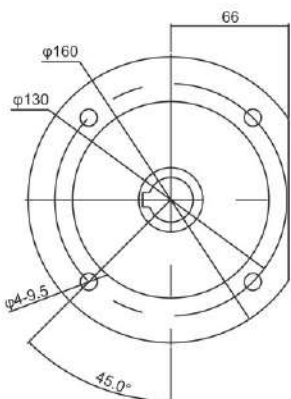
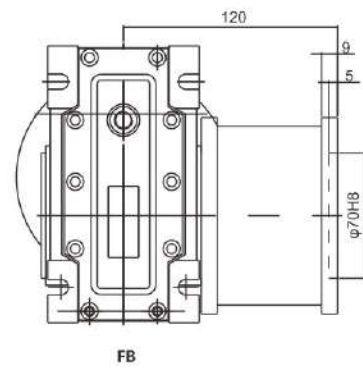
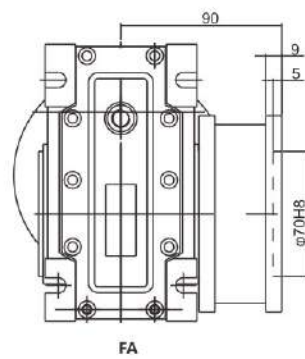
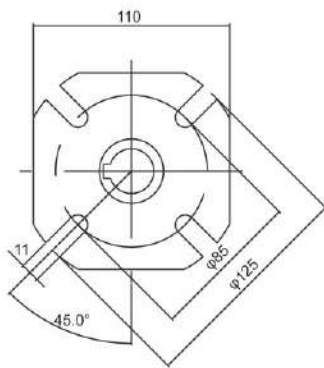
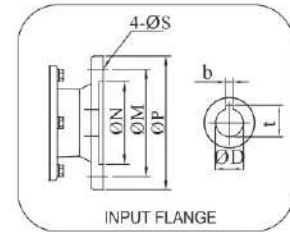
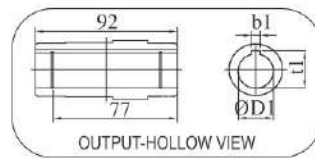
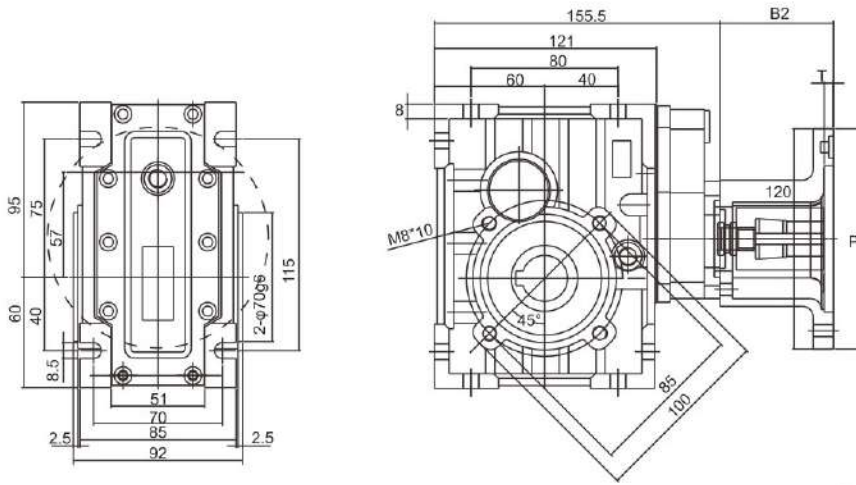
Gear units	I Nominal	I Actual	n_2 [r/min]	M_2max [Nm]	F_{r2} [N]	IEC 63	IEC 71	IEC 80	IEC 90
3 Stage									
TKM090C	300	297.21	4.71	500	8300				
TKM090C	250	241.05	5.80	500	8300				
TKM090C	200	200.73	6.91	480	8300				
TKM090C	150	151.30	9.25	500	8050				
TKM090C	125	125.95	11.12	480	7580				
TKM090C	100	99.15	14.12	380	7000				
TKM090C	75	75.40	18.57	300	6390				
TKM090C	60	62.45	22.42	480	6000				
TKM090C	50	49.15	28.48	380	5540				
2 Stage									
TKM090B	60	59.44	23.55	500	5890				
TKM090B	50	48.21	29.04	500	5500				
TKM090B	40	40.14	34.88	480	5170				
TKM090B	30	30.26	46.27	500	4710				
TKM090B	25	25.20	55.56	480	4430				
TKM090B	20	19.83	70.60	380	4090				
TKM090B	15	15.08	92.84	300	3730				
TKM090B	12.5	12.49	112.09	480	3510				
TKM090B	10	9.83	142.42	380	3240				
TKM090B	7.5	7.40	189.19	300	2950				

TKM050B-IEC



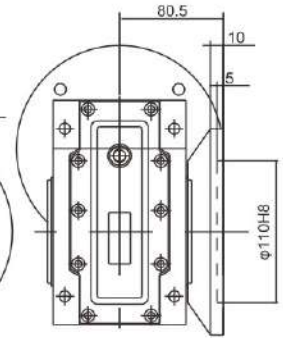
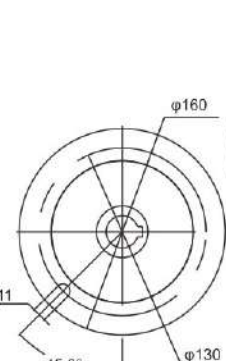
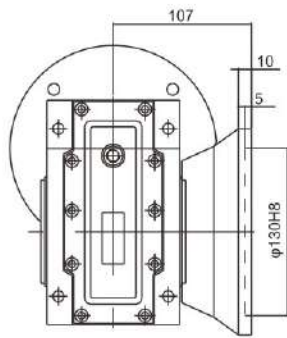
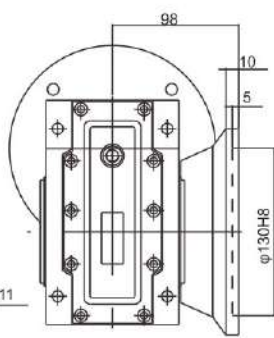
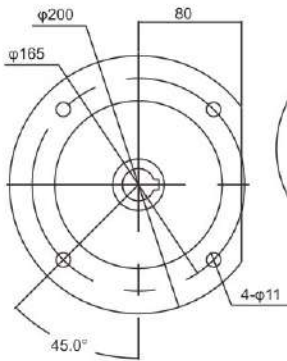
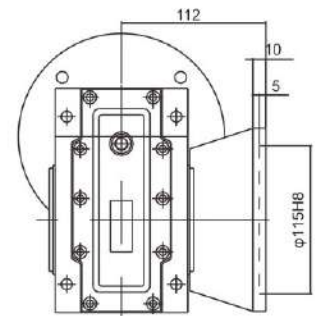
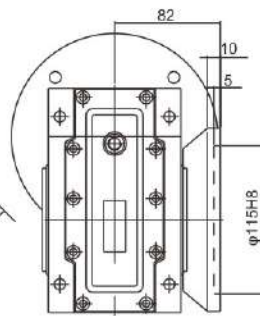
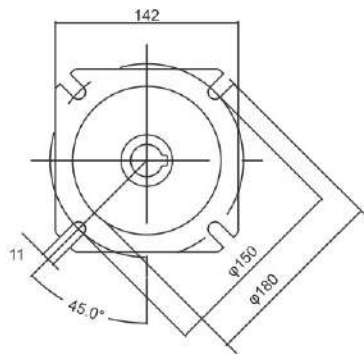
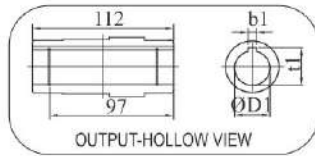
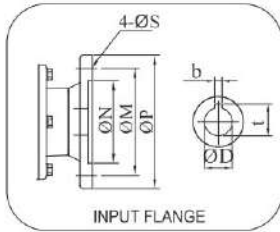
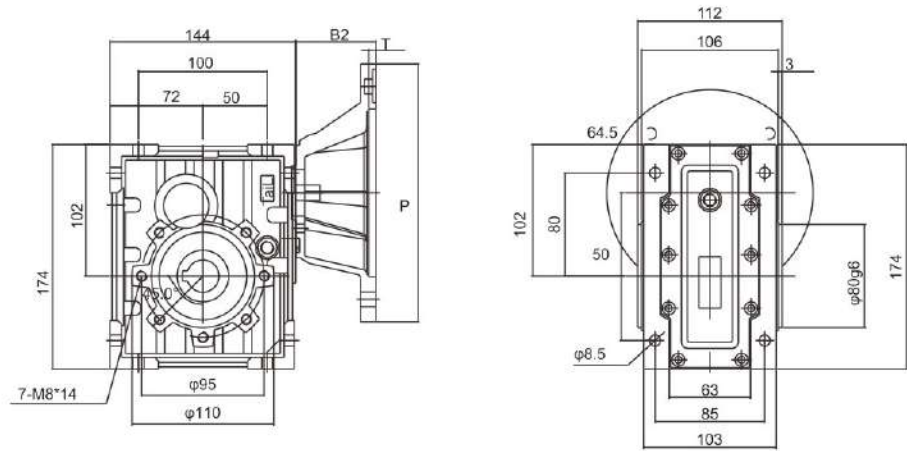
IEC	DE8	b	t	P	M	N	S	T	B2	D1H8	b1	t1
63B5	11	4	12.8	140	115	95	9	4	45	20*	6	22.8
71B5	14	5	16.3	160	130	110	9	4	52	24*	8	27.3
71B14	14	5	16.3	105	85	70	7	4	52	25	8	28.3
80B5	19	6	21.8	200	165	130	11	4	72	Weight without motor ≈4.2kg		
80B14	19	6	21.8	120	100	80	7	4	72			
90B5	24	8	27.3	200	165	130	11	4	72			
90B14	24	8	27.3	140	115	95	9	4	72			

TKM050C-IEC



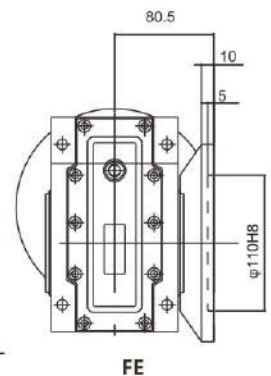
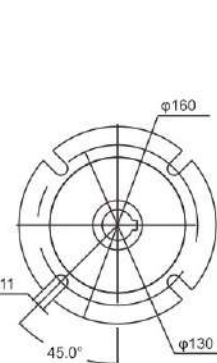
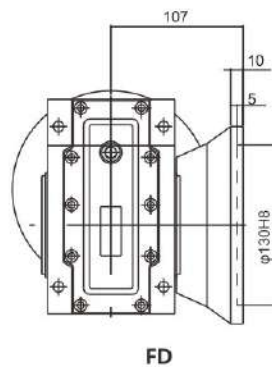
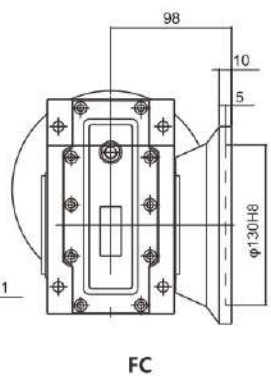
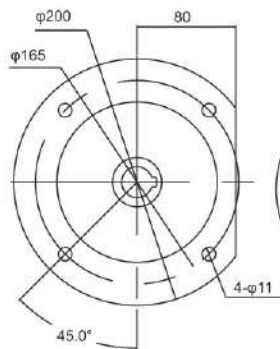
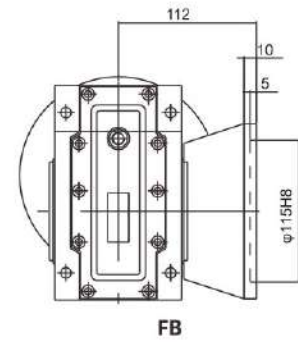
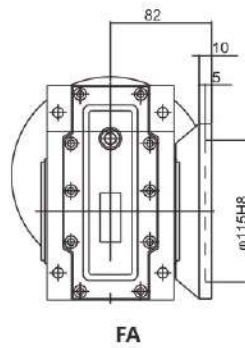
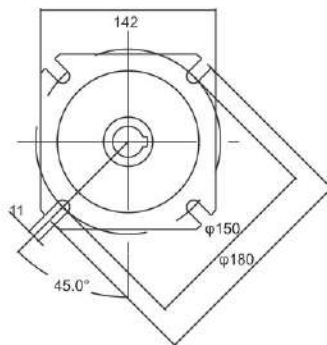
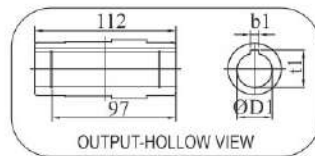
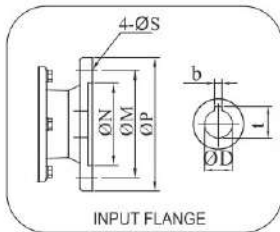
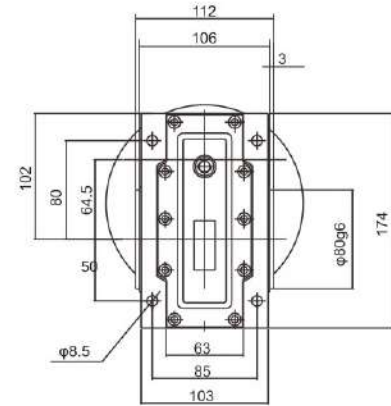
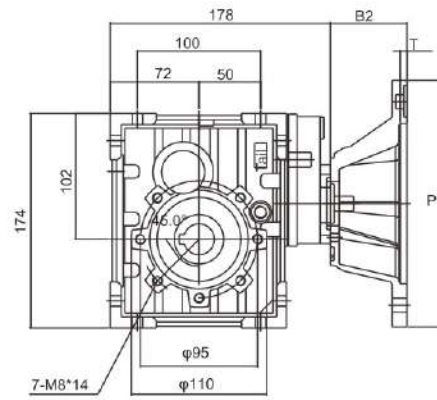
IEC	DE8	b	t	P	M	N	S	T	B2	D1H8	b1	t1	Weight without motor ≈5kg
63B5	11	4	12.8	140	115	95	9	4	45	20°	6	22.8	
71B5	14	5	16.3	160	130	110	9	4	52	24°	8	27.3	
71B14	14	5	16.3	105	85	70	7	4	52	25	8	28.3	

TKM063B-IEC



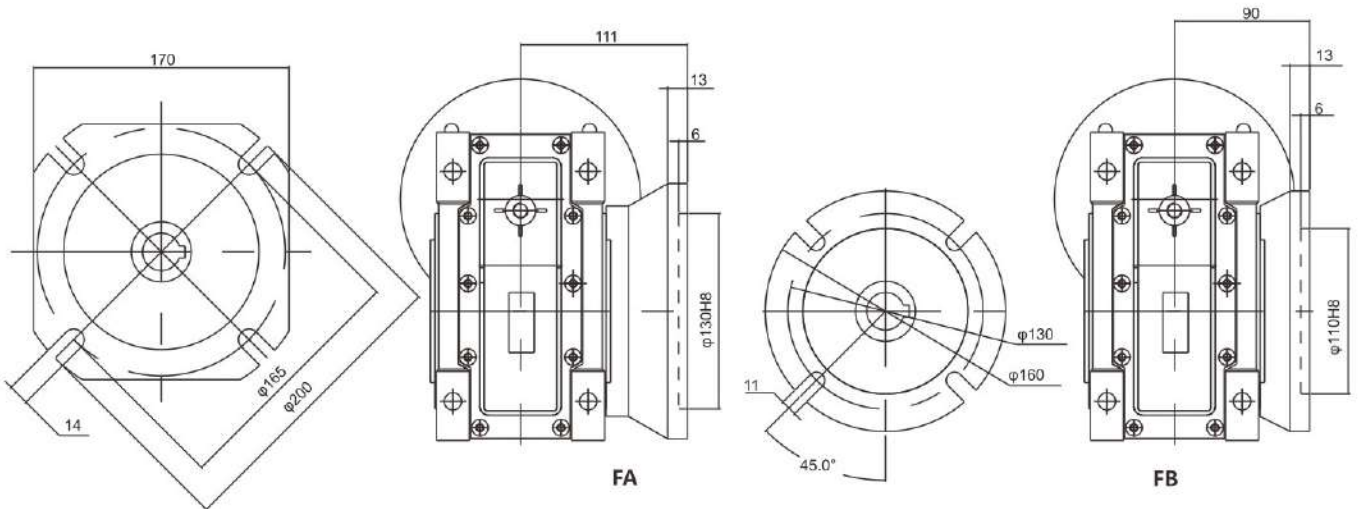
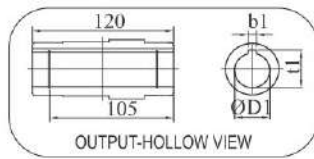
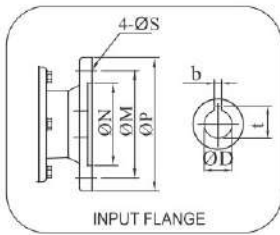
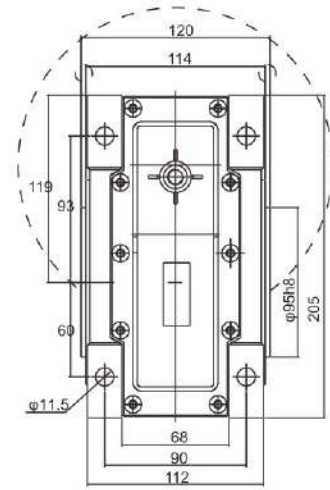
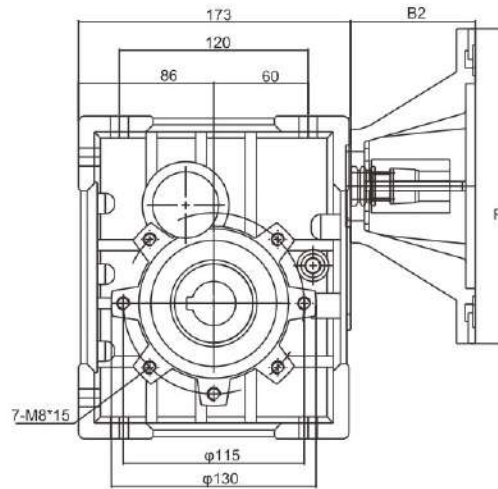
IEC	DE8	b	t	P	M	N	S	T	B2	D1H8	b1	t1
63B5	11	4	12.8	140	115	95	9	4	45	25	8	28.3
71B5	14	5	16.3	160	130	110	9	4	52	28*	8	31.3
71B14	14	5	16.3	105	85	70	7	4	52	Weight without motor: 6kg		
80B5	19	6	21.8	200	165	130	11	4	72			
80B14	19	6	21.8	120	100	80	7	4	72			
90B5	24	8	27.3	200	165	130	11	4	72			
90B14	24	8	27.3	140	115	95	9	4	72			

TKM063C-IEC



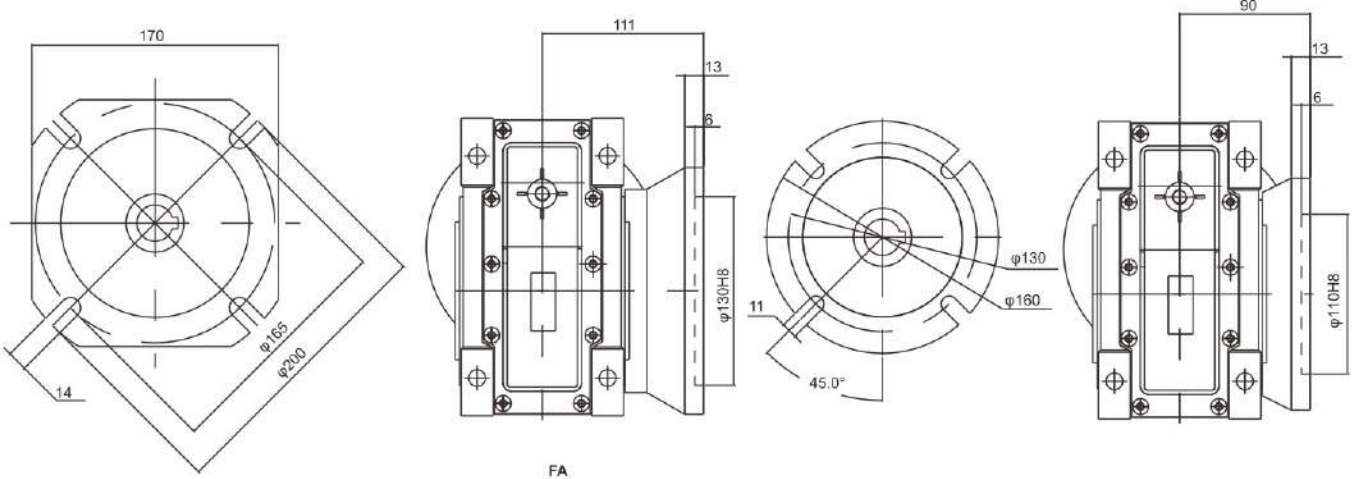
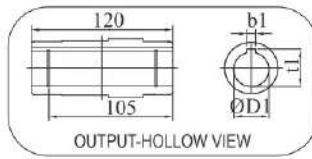
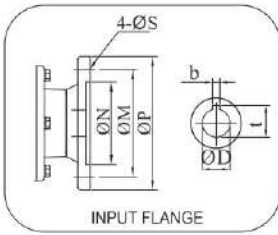
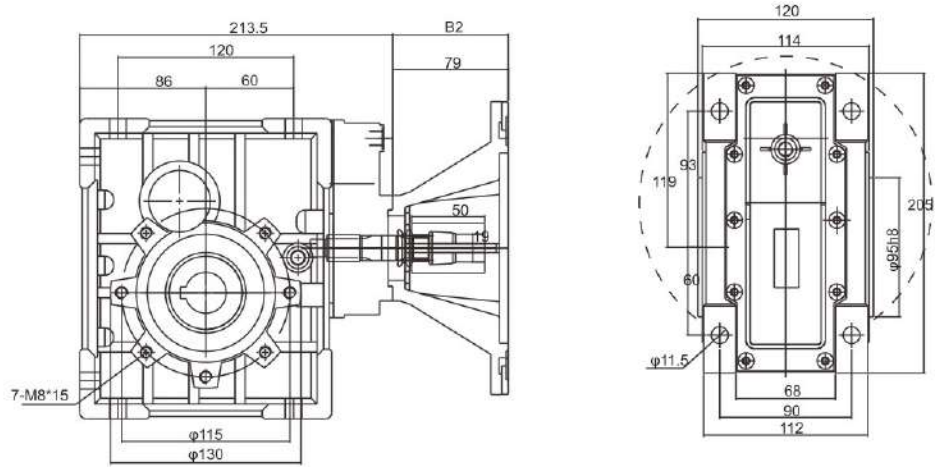
IEC	DE8	b	t	P	M	N	S	T	B2	D1H8	b1	t1
63B5	11	4	12.8	140	115	95	9	4	45	25	8	28.3
71B5	14	5	16.3	160	130	110	9	4	52	28*	8	31.3
71B14	14	5	16.3	105	85	70	7	4	52	Weight without motor : 6kg		
80B5	19	6	21.8	200	165	130	11	4	72			
80B14	19	6	21.8	120	100	80	7	4	72			

TKM075B-IEC



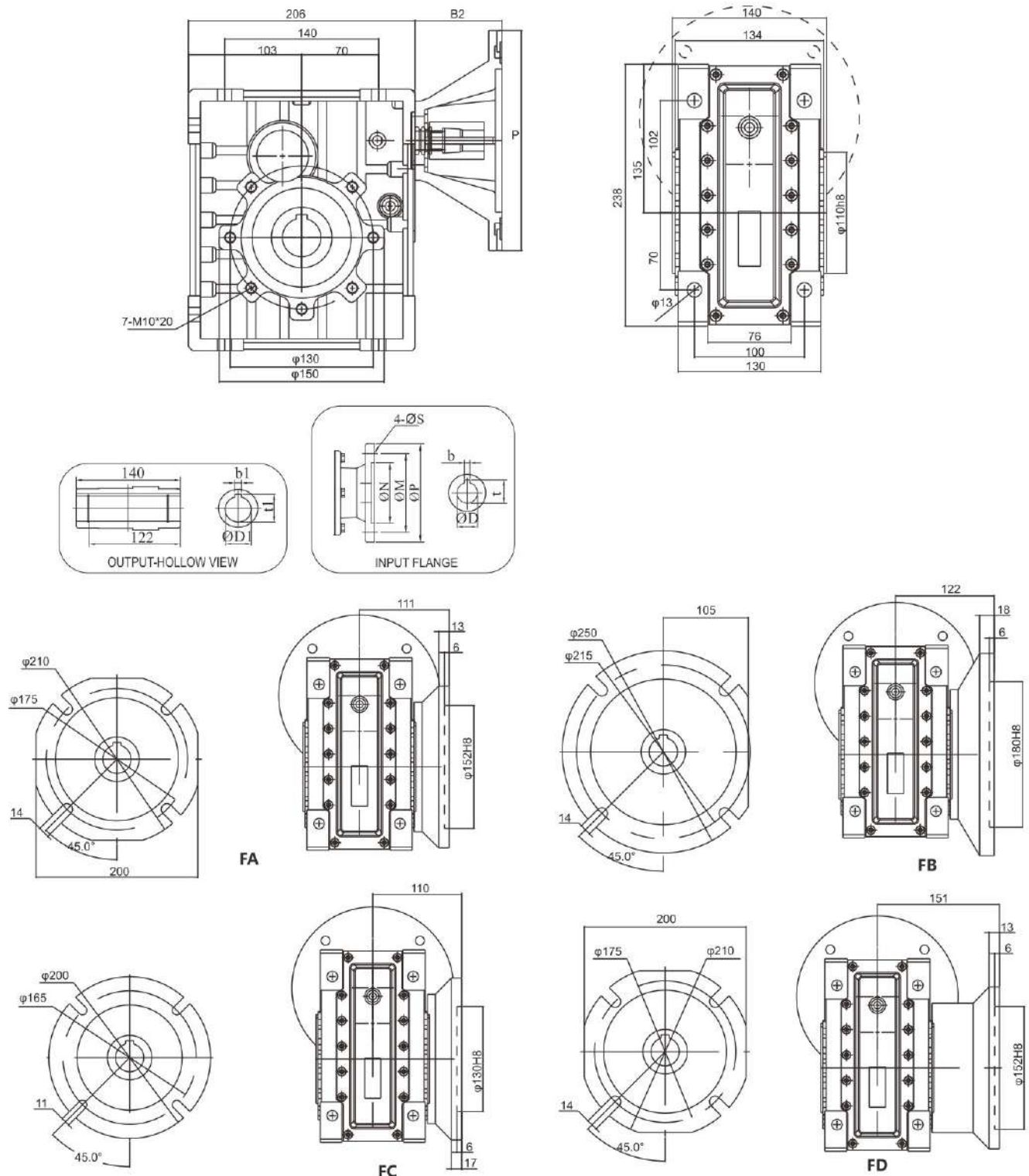
IEC	DE8	b	t	P	M	N	S	T	B2	D1H8	b1	t1
71B5	14	5	16.3	160	130	110	9	4	59	28	8	31.3
80B5	19	6	21.8	200	165	130	11	4	79	30*	8	33.3
80B14	19	6	21.8	120	100	80	7	4	79	35*	10	38.3
90B5	24	8	27.3	200	165	130	11	4	79	Weight without motor: 9.2kg		
90B14	24	8	27.3	140	115	95	9	4	79			
100/112B5	28	8	31.3	215	215	180	13.5	4.5	89			
100/112B14	28	8	31.3	130	130	110	9	4.5	89			

KM075C-IEC



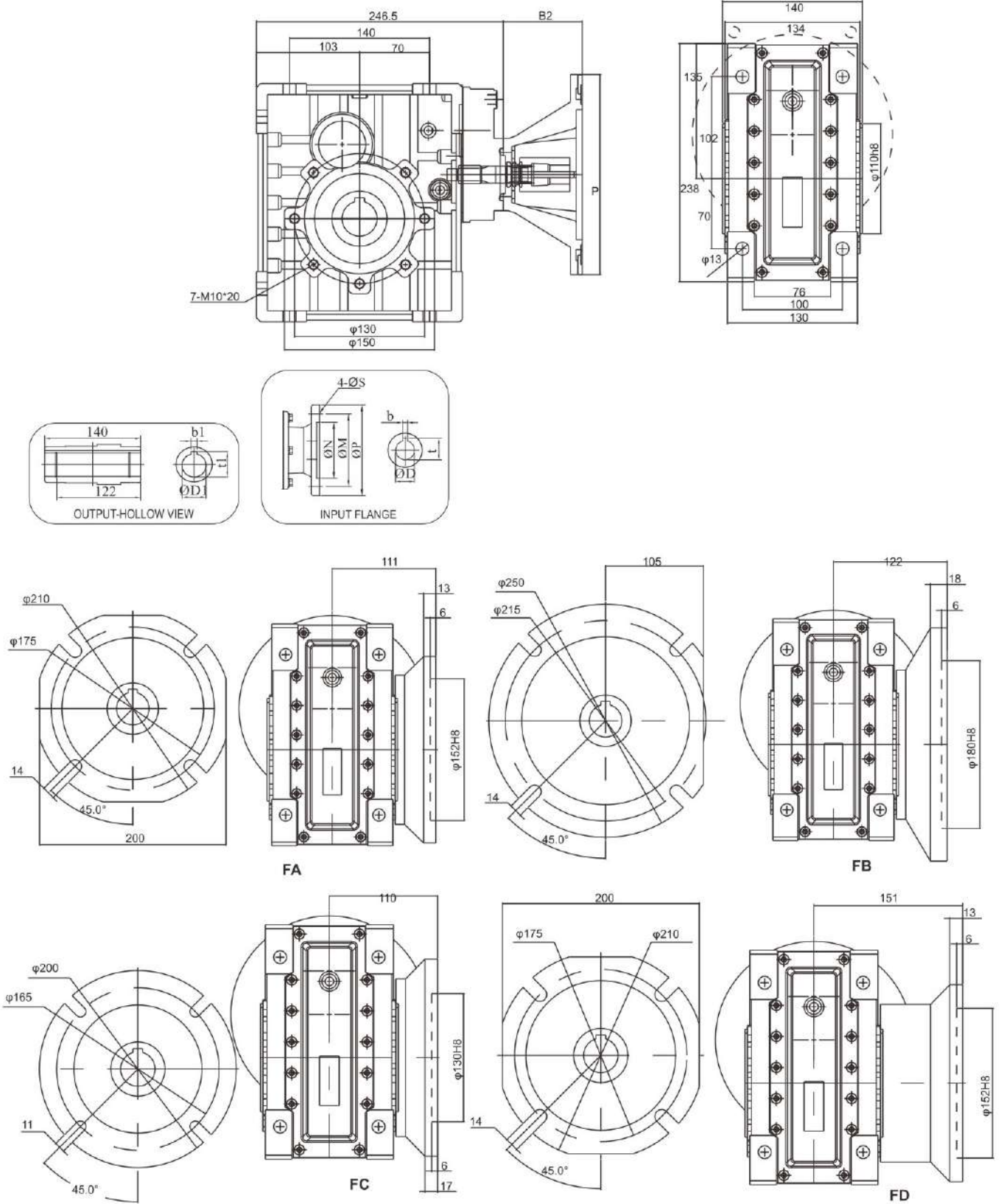
IEC	DE8	b	t	P	M	N	S	T	B2	D1H8	b1	t1
63B5	11	4	12.8	140	115	95	9	4	52	28	8	31.3
71B5	14	5	16.3	160	130	110	9	4	59	30°	8	33.3
80B5	19	6	21.8	200	165	130	11	4	79	35°	10	38.3
80B14	19	6	21.8	120	100	80	7	4	79	Weight without motor : 10.8kg		
90B5	24	8	27.3	200	165	130	11	4	79			
90B14	24	8	27.3	140	115	95	9	4	79			

KM090B-IEC



IEC	DE8	b	t	P	M	N	S	T	B2	D1H8	b1	t1
71B5	14	5	16.3	160	130	110	9	4	59	35	10	38.3
80B5	19	6	21.8	200	165	130	11	4	79	38*	10	41.3
80B14	19	6	21.8	120	100	80	7	4	79	Weight without motor: 3.3kg		
90B5	24	8	27.3	200	165	130	11	4	79			
90B14	24	8	27.3	140	115	95	9	4	79			
100/112B5	28	8	31.3	250	215	180	13.5	4.5	89			
100/112B14	28	8	31.3	160	130	110	9	4.5	89			

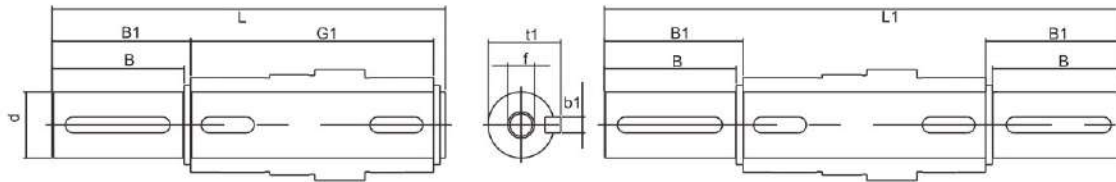
KM090C-IEC



IEC	DE8	b	t	P	M	N	S	T	B2	D1H8	b1	t1
63B5	11	4	12.8	140	115	95	9	4	52	35	10	38.3
71B5	14	5	16.3	160	130	110	9	4	59	38*	10	41.3
80B5	19	6	21.8	200	165	130	11	4	79	Weight without motor : 4.8Kg		
80B14	19	6	21.8	120	100	80	7	4	79			
90B5	24	8	27.3	200	165	130	11	2	79			
90B14	24	8	27.3	140	115	95	9	4	79			

ACCESSORIES OUTLINE DIMENSION SHEET

Output Shafts



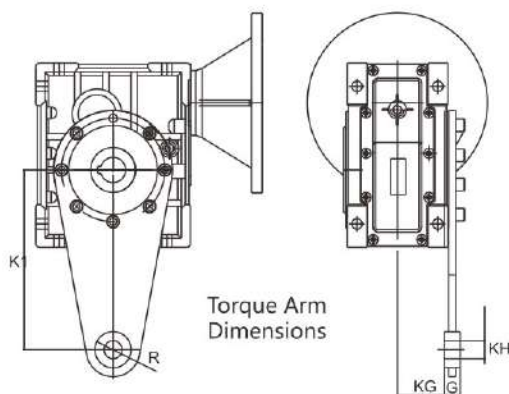
Solid Output Shaft Dimension

Type	d h6	B	B1	G1	L	L1	f	b1	t1
TKM050	25	50	53.5	92	153	199	M10*22	8	28
TKM063	25	50	53.5	92	173	219	M10*22	8	28
TKM075	28	60	63.5	92	192	247	M10*22	8	31
TKM090	35	80	84.5	92	234	309	M12*28	10	38

*Non-standard products, please specify when ordering
 *Only on request

Torque Arm

TKM.. / Torque Arm



Type	K1	G	KG	KH	R
TKM050	100	14	38.5	10	18
TKM063	150	14	49	10	18
TKM075	200	25	47.5	20	30
TKM090	200	25	57.5	20	30

TKB.. / Torque Arm

Type	K1	B	C	D	E	F	G	kH	I
TKB38	150	55	233	75	90	9	20	10	6
TKB48	200	60	300	90	110	9	25	20	6
TKB58	200	80	318	110	130	11	25	20	6
TKB68	250	100	388	130	165	13	25	20	6



Hypoid-Helical Gear Series