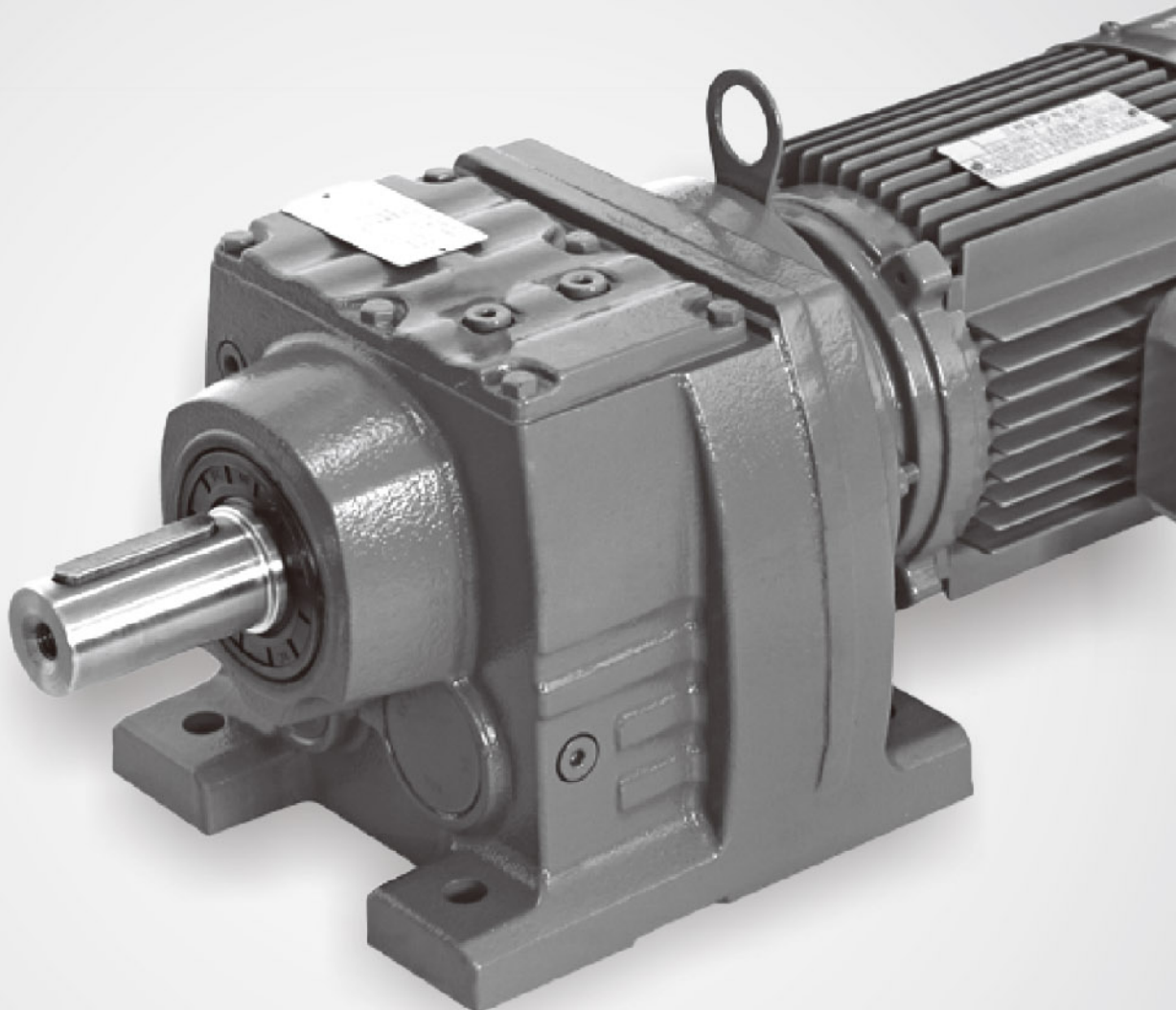
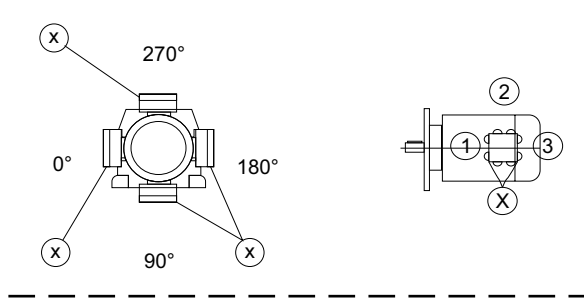


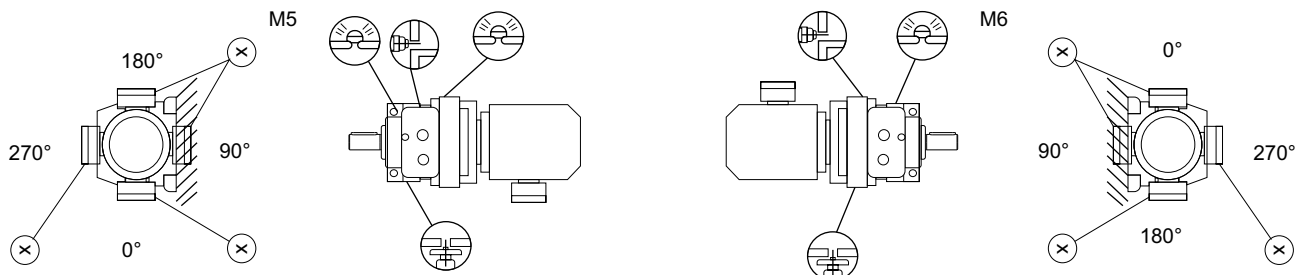
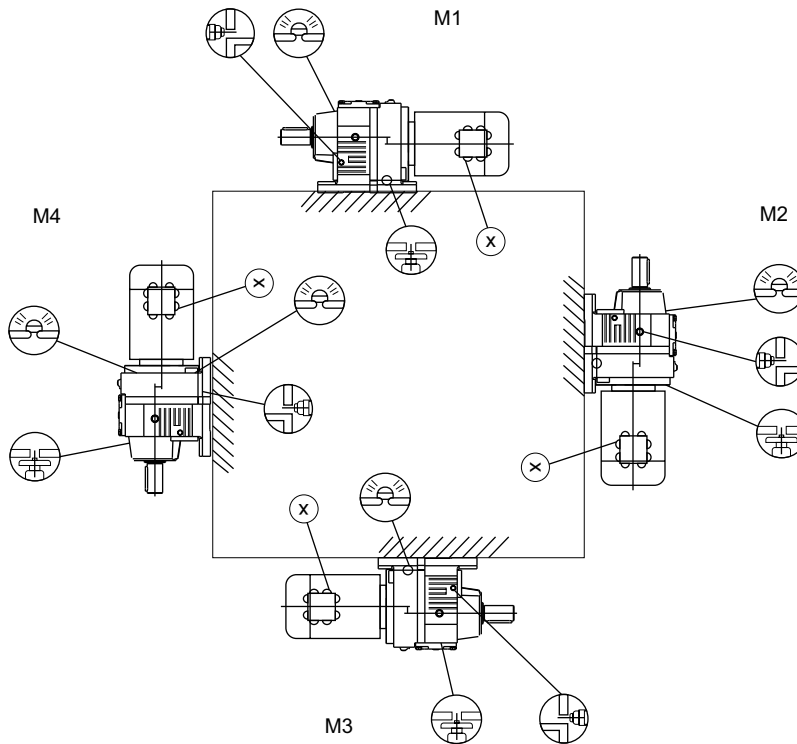
HANCO

HANCO Gear Reducer





R37-R167



Input Horse Power & Output Torque Ratings

HANCO

ACTUAL RATIO	OUTPUT TORQUE N.M	OUTPUT (RPM)	S.F	STAGE	TYPE
--------------	-------------------	--------------	-----	-------	------

0.25HP

5.06	6.32	277	21.30	2	HR 37
10.11	12.7	138	13.44		
15.60	19.5	90	10.38		
19.31	24.7	71	8.55		
26.03	33	53	5.75		
32.40	43	40	4.44	3	HR 37
39.17	53	33	3.88		
48.08	63	27	3.20		
55.76	73	24	2.60		
61.18	80	22	2.50		
69.33	90	19	2.20		
73.96	96	18	2.10		
84.61	110	16	1.80		
90.77	118	15	1.70		
105.28	137	13	1.45		
123.66	161	11	1.25		
134.82	176	9.8	1.15		
100.86	131	13	2.30	3	HR 47
114.17	149	12	2.00		
121.87	159	11	1.90		
139.99	182	9.4	1.65		
162.94	210	8.1	1.40		
176.88	230	7.5	1.30		

0,5HP

5.06	13	277	10.40	2	HR-37
10.11	25	139	6.54		
15.60	40	88	5.00		
19.31	49	71	4.10		
26.03	67	53	2.80		
32.40	83	43	2.40	3	HR-37
39.17	100	35	2.00		
48.08	123	29	1.60		
61.18	157	23	1.30		
69.33	178	20	1.15		
76.23	195	18	1.55	3	HR-47
100.86	260	14	1.15		
114.17	290	12	1.05		
106.58	275	13	1.65	3	H5-57
128.77	330	11	1.35		
158.14	405	8.7	1.50	3	HR-67
184.07	470	7.5	1.25		

0,75HP

5.00	19	272	4.90	2	HR-27
10.13	39	134	3.10		
15.63	60	87	2.20		
19.35	75	70	1.75		
24.47	95	56	1.40	3	HR-27
28.78	111	47	1.15		
5.06	19	277	7.00	2	HR-37
10.11	38	139	4.40		
15.60	60	87	3.30		
19.31	75	70	2.70		
24.42	94	56	2.10	3	HR-37
32.40	125	42	1.60		

ACTUAL RATIO	OUTPUT TORQUE N.M	OUTPUT (RPM)	S.F	STAGE	TYPE
--------------	-------------------	--------------	-----	-------	------

39.17	151	35	1.30		
48.08	186	28	1.10		
29.88	115	46	2.60	3	HR-47
34.73	134	39	2.20		
42.87	166	32	1.80		
47.75	184	28	1.65		
56.73	220	24	1.35		
64.21	250	21	1.20		
48.23	186	28	2.40	3	HR-57
57.29	220	24	2.00		
69.23	265	20	1.70		
89.71	345	15	1.30		
106.58	410	13	1.10		
86.11	335	16	1.80	3	HR-67
105.83	410	13	1.45		
128.97	500	11	1.20		
102.99	400	13	2.10	3	HR-77
121.42	470	11	1.75		
145.67	565	9.3	1.45		
166.59	645	8.2	1.25		
142.41	550	9.6	2.80	3	HR-87
181.77	700	7.5	2.20		
205.71	795	6.6	1.95		
216.54	840	6.3	1.85		
246.54	950	5.5	1.65		
241.25	930	5.6	3.20	3	HR-97
289.74	1120	4.7	2.70		

1HP

5.06	26	277	5.13	2	HR-37
10.11	53	137	3.20		
15.60	81	88	2.50		
19.31	100	71	2.00		
24.42	127	57	1.60	3	HR-37
32.40	168	43	1.20		
39.17	205	35	1.00		
48.08	250	29	0.80		
29.88	155	46	1.95	3	HR-47
34.73	180	40	1.65		
42.87	225	32	1.35		
47.75	250	29	1.20		
56.73	275	26	1.00		
64.21	335	21	0.90		
48.23	250	29	1.80	3	HR-57
57.29	295	24	1.50		
69.23	360	20	1.25		
89.71	465	15	0.95		
106.58	555	13	0.80		
86.11	445	16	1.35	3	HR-67
105.83	550	13	1.10		
128.97	670	11	0.90		
102.99	535	13	1.55	3	HR-77
121.42	630	11	1.30		
145.67	755	9.5	1.10		
166.59	860	8.3	0.95		

ACTUAL RATIO	OUTPUT TORQUE N.M	OUTPUT (RPM)	S.F	STAGE	TYPE
--------------	-------------------	--------------	-----	-------	------

142.41	740	9.7	2.10	3	HR-87
181.77	940	7.6	1.65		
205.71	1070	6.7	1.45		
216.54	1120	6.4	1.40		
246.54	1280	5.6	1.20		
241.25	1250	5.7	2.40	3	HR-97
289.74	1500	4.8	2.00		

1.5HP

5.06	38	277	3.50	2	HR-37
10.11	76	139	2.20		
15.60	117	90	1.70		
19.31	145	73	1.40		
24.42	183	57	1.10	3	HR-37
4.85	36	291	4.09	2	HR-47
10.15	76	138	3.00		
14.56	109	96	2.40		
19.27	145	73	2.00		
23.28	175	60	1.70		
29.88	225	47	1.35	3	HR-47
34.73	260	40	1.15		
24.99	188	56	2.40	2	HR-57
30.18	225	46	2.00	3	HR-57
35.07	265	40	1.70		
43.30	325	32	1.40		
48.23	360	29	1.25		
57.29	430	24	1.05		
39.88	300	35	1.95	3	HR-67
51.56	385	27	1.55		
61.26	460	23	1.30		
74.17	555	17	1.10		
52.07	390	27	2.10	3	HR-77
57.68	435	24	1.90		
77.24	580	18	1.40		
92.87	700	15	1.20		
72.57	545	19	2.80	3	HR-87
93.38	700	15	2.20		
118.43	890	12	1.75		
142.41	1070	9.8	1.45		
155.34	1170	9	1.35		
181.77	1360	7.7	1.15		
150.78	1130	9.3	2.70	3	HR-97
170.02	1280	8.2	2.30		
186.30	1400	7.5	2.20		
216.28	1620	6.5	1.65		
241.25	1810	5.8	1.65		
255.71	1920	5.5	1.55		

2HP

5.06	51	279	2.60	2	HR-37
10.11	103	140	1.65		
15.60	159	90	1.25		
19.31	196	73	1.00		
4.85	49	291	3.00	2	HR-47
10.15	103	139	2.20		
14.56	148	97	1.80		

ACTUAL RATIO	OUTPUT TORQUE N.M	OUTPUT (RPM)	S.F	STAGE	TYPE
--------------	-------------------	--------------	-----	-------	------

19.27	196	73	1.50		
23.28	235	61	1.25		
29.88	305	47	1.00	3	HR-47
34.73	355	41	0.85		
24.99	255	56	1.75	2	HR-57
30.18	305	47	1.45	3	HR-57
35.07	355	40	1.25		
43.30	440	33	1.00		
48.23	490	29	0.90		
32.27	330	44	1.65	3	HR-67
39.88	405	35	1.45		
51.56	525	27	1.15		
61.26	620	23	0.95		
52.07	530	27	1.55	3	HR-77
57.68	585	24	1.40		
77.24	785	18	1.05		
92.87	940	15	0.85		
72.57	735	19	2.10	3	HR-87
93.38	950	15	1.65		
118.43	1200	12	1.30		
142.41	1450	9.9	1.05		
155.34	1580	9.1	1.00		
181.77	1850	7.8	0.85		
150.78	1530	9.4	1.95	3	HR-97
170.02	1730	8.3	1.75		
186.30	1890	7.6	1.60		
216.28	2200	6.5	1.35		
241.25	2450	5.8	1.20		
255.71	2600	5.5	1.15		

3HP

4.85	37	577	2.10	2	HR-47
10.15	78	266	1.50		
14.56	112	187	1.20		
19.27	148	142	1.05		
5.05	136	284	4.09	2	HR-57
9.35	139	151	2.70		
14.77	220	95	2.00		
21.93	325	64	1.40		
30.18	450	47	1.00	3	HR-57
4.93	74	288	4.00	2	HR-67
10.00	149	141	3.20		
14.91	220	95	2.50		
19.89	295	71	2.00		
23.44	350	60	1.60		
28.83	430	49	1.20	3	HR-67
39.88	595	35	1.00		
25.23	375	56	2.10	3	HR-77
29	430	49	1.90		
36.83	550	38	1.50		
43.26	645	33	1.25		
52.07	775	27	1.05		
41.74	620	34	2.50	3	HR-87
52.82	785	27	1.95		
60.35	900	23	1.70		

Input Horse Power & Output Torque Ratings

HANCO

ACTUAL RATIO	OUTPUT TORQUE N.M	OUTPUT (RPM)	S.F	STAGE	TYPE
--------------	-------------------	--------------	-----	-------	------

72.57	1080	19	1.45		
93.38	1390	15	1.10		
53.21	795	27	3.80	3	HR-97
59.92	890	24	3.40		
72.17	1080	20	2.80		
92.48	1380	15	2.20		
116.48	1740	12	1.75		
150.75	2250	9.4	1.35		
170.02	2530	8.3	1.20		
186.30	2780	7.6	1.10		
115.63	1720	12	2.80	3	HR-107
141.83	2110	9.9	2.00		
172.34	2570	8.2	1.65		
203.16	3030	6.9	1.40		
251.15	3740	5.6	1.15		

4HP

4.85	99	288	1.50	2	HR-47
10.15	210	138	1.10		
14.56	300	96	0.90		
5.05	103	277	3.00	2	HR-57
9.35	191	150	1.95		
14.77	300	95	1.45		
21.93	450	64	1.00		
4.93	101	288	2.93	2	HR-67
10	205	140	2.30		
14.91	305	94	1.80		
19.89	405	70	1.45		
23.44	480	60	1.15		
15.60	320	90	2.30	2	HR-77
21.43	440	65	1.85		
25.23	515	55	1.50	3	HR-77
29.00	595	48	1.40		
36.83	755	38	1.10		
23.40	480	60	3.20	2	HR-87
31.80	640	45	2.40		
34.40	705	41	2.10		
32.66	670	43	2.30	3	HR-87
41.74	850	34	1.80		
52.82	1080	27	1.45		
60.23	1230	23	1.25		
72.57	1490	19	1.05		
53.21	1090	26	2.80	3	HR-97
59.92	1230	23	2.50		
72.17	1480	19	2.00		
92.48	1890	15	1.60		
116.48	2380	12	1.25		
150.75	3090	9.3	0.95		
115.63	2370	12	1.80	3	HR-107
141.83	2900	9.9	1.50		
172.34	3530	8.1	1.20		
203.16	4160	6.9	1.05		

ACTUAL RATIO	OUTPUT TORQUE N.M	OUTPUT (RPM)	S.F	STAGE	TYPE
--------------	-------------------	--------------	-----	-------	------

5.5HP

5.05	185	283	1.65	2	HR-57
9.35	345	153	1.10		
14.77	545	97	0.80		
4.93	133	288	2.20	2	HR-67
10	270	142	1.75		
14.91	400	95	1.35		
19.89	535	71	1.10		
15.60	420	91	1.75	2	HR-77
21.43	575	66	1.40		
25.23	680	56	1.15	3	HR-77
29	780	49	1.05		
36.83	990	39	0.85		
23.40	630	61	2.50	2	HR-87
27.84	750	51	2.10		
34.40	930	41	1.60		
32.66	880	43	1.75	3	HR-87
41.74	1120	34	1.40		
52.82	1420	27	1.10		
60.23	1620	24	0.95		
53.21	1430	27	2.10	3	HR-97
59.92	1610	24	1.85		
72.17	1940	20	1.55		
92.48	2490	15	1.20		
92.70	2490	15	1.70	3	HR-107
115.63	3110	12	1.40		
141.83	3820	10	1.15		
172.34	4640	8.2	0.95		

7.5HP

5.31	195	269	2.60	2	HR-77
9.64	355	148	1.80		
15.60	575	92	1.30		
5.30	198	270	4.63	2	HR-87
9.90	365	144	3.20		
15.35	565	93	2.40		
19.10	700	75	2.00		
23.40	860	61	1.80		
27.84	1020	51	1.50		
27.88	1020	51	1.45	3	HR-87
32.66	1200	44	1.30		
41.74	1530	34	1.00		
25.03	920	57	3.10	2	HR-97
32.05	1180	45	2.20		
33.25	1220	43	2.40	3	HR-97
42.78	1570	33	1.90		
47.58	1750	30	1.70		
59.92	2200	24	1.35		
72.17	2650	20	1.15		

ACTUAL RATIO	OUTPUT TORQUE N.M	OUTPUT (RPM)	S.F	STAGE	TYPE
--------------	-------------------	--------------	-----	-------	------

47.63	1750	30	2.50	3	HR-107
59.42	2180	24	1.95		
72.88	2680	20	1.60		
92.70	3400	15	1.25		
115.63	4250	12	1.00		
113.72	4180	13	1.90	3	HR-137
141.12	5180	10	1.56		
174.40	6410	8.2	1.25		
188.45	6920	7.6	1.15		

10HP

5.31	265	269	1.90	2	HR-77
9.64	485	148	1.30		
15.60	780	92	0.95		
5.30	265	270	3.40	2	HR-87
9.90	495	144	2.40		
15.35	770	93	1.75		
19.10	960	75	1.50		
23.40	1170	61	1.30		
27.84	1390	51	1.10		
27.88	1400	51	1.05	3	HR-87
32.66	1640	44	0.95		
25.03	1250	57	2.30	2	HR-97
32.05	1610	45	1.60		
33.25	1670	43	1.75	3	HR-97
42.78	2140	33	1.40		
47.58	2380	30	1.25		
59.92	3000	24	1.00		
47.63	2390	30	1.80	3	HR-107
59.42	2980	24	1.45		
72.88	3650	20	1.20		
92.70	4640	15	0.95		
88.70	4440	16	1.80	3	HR-137
113.72	5700	13	1.40		
141.12	7070	10	1.15		
174.40	8730	8.2	0.90		
188.45	9440	7.6	0.85		
159.00	7290	9	1.80	3	HR-147
189.00	8680	7.6	1.50		
214.00	9810	6.7	1.30		
247.00	11400	5.8	1.15		

15HP

5.30	385	272	2.30	2	HR-87
9.90	720	145	1.65		
15.35	1120	94	1.20		
5.20	379	282	4.80	2	HR-97
10.83	790	133	2.70		
14.62	1070	98	2.20		
20.14	1470	71	1.80		
25.03	1830	58	1.55		
27.58	2010	52	1.35	3	HR-97
33.25	2430	43	1.20		

ACTUAL RATIO	OUTPUT TORQUE N.M	OUTPUT (RPM)	S.F	STAGE	TYPE
--------------	-------------------	--------------	-----	-------	------

20.07	1469	72	2.90	2	HR-107
24.90	1820	58	2.40		
30.77	2240	47	1.90		
29.49	2150	49	2.00	3	HR-107
40.37	2940	36	1.45		
47.63	3470	30	1.25		
32.91	2400	44	3.30	3	HR-137
37.65	2750	38	2.90		
50.86	3710	28	2.20		
59.17	4320	24	1.85		
73.49	5360	20	1.50		
88.70	6470	16	1.25		
52.87	3860	27	3.40	3	HR-147
61.09	4460	24	2.90		
72.09	5260	20	2.50		
94.60	6900	15	1.90		
119.86	8740	12	1.50		
146.91	10700	9.8	1.20		
163.31	11900	8.8	1.10		

20HP

5.30	520	275	1.75	2	HR-87
9.90	970	147	1.20		
5.20	518	282	3.45	2	HR-97
10.83	1060	135	1.95		
14.62	1430	100	1.60		
20.14	1980	72	1.30		
25.03	2460	58	1.15		
20.07	1970	73	2.20	2	HR-107
24.90	2440	59	1.75		
30.77	3020	47	1.40		
29.49	2890	52	1.50	3	HR-107
35.26	3460	41	1.25		
40.37	3960	36	1.10		
32.91	3230	44	2.50	3	HR-137
37.65	3690	39	2.20		
50.86	4990	29	1.60		
59.17	5800	25	1.40		
73.49	7210	20	1.10		
52.87	5190	28	2.50	3	HR-147
61.09	5990	24	2.20		
72.09	7070	20	1.85		
94.60	9280	15	1.40		
109.31	10700	13	1.20		
107.49	10500	14	1.70	3	HR-167
121.81	12000	12	1.50		
139.98	13700	10	1.30		
153.07	15000	9.5	1.20		

Input Horse Power & Output Torque Ratings

HANCO

ACTUAL RATIO	OUTPUT TORQUE N.M	OUTPUT (RPM)	S.F	STAGE	TYPE
--------------	-------------------	--------------	-----	-------	------

25HP

5.20	625	282	2.80	2	HR-97
10.83	1310	135	1.60		
14.62	1760	100	1.30		
5.20	638	282	2.85	2	HR-107
10.13	1220	145	3.50		
15.65	1890	94	2.30		
20.07	2420	73	1.80		
24.90	3000	59	1.45		
29.49	3560	50	1.20	3	HR-107
19.04	2300	77	3.50	2	HR-137
24.12	2910	61	2.80		
32.91	3970	45	2.00	3	HR-137
37.65	4540	39	1.75		
50.86	6130	29	1.30		
59.17	7140	25	1.10		
40.29	4860	36	2.70	3	HR-147
52.87	6380	28	2.00		
61.09	7370	24	1.75		
72.09	8690	20	1.50		
94.60	11400	15	1.15		
73.70	8890	20	2.00	3	HR-167
93.19	11200	16	1.60		
121.81	14700	12	1.25		
139.98	16900	10	1.05		

30HP

5.20	745	282	2.40	2	HR-97
10.83	1550	135	1.35		
14.62	2100	100	1.10		
4.92	716	299	4.09	2	HR-107
10.13	1450	145	3.00		
15.65	2240	94	1.90		
20.07	2880	73	1.50		
24.90	3570	59	1.20		
29.49	4230	50	1.00	3	HR-107
19.04	2730	77	2.90	2	HR-137
24.12	3460	61	2.30		
29.15	4240	50	1.85		
32.91	4720	45	1.70	3	HR-137
37.65	5400	39	1.50		
50.86	7290	29	1.10		
40.29	5780	36	2.20	3	HR-147
52.86	7580	28	1.70		
61.09	8760	24	1.50		
72.09	10300	20	1.25		
73.70	10600	20	1.70	3	HR-167
93.19	13400	16	1.35		
121.81	17500	12	1.05		

ACTUAL RATIO	OUTPUT TORQUE N.M	OUTPUT (RPM)	S.F	STAGE	TYPE
--------------	-------------------	--------------	-----	-------	------

40HP

4.92	960	299	3.00	2	HR-107
10.03	1970	145	2.20		
15.65	3050	94	1.40		
14.51	2830	101	2.80	2	HR-137
19.04	3710	77	2.20		
24.12	4700	61	1.70		
27.83	5420	53	1.40	3	HR-137
32.91	6410	45	1.25		
29.95	5840	49	2.20	3	HR-147
40.29	7850	36	1.65		
52.87	10300	28	1.25		
61.09	11900	24	1.10		
51.76	10100	28	1.80	3	HR-167
58.65	11400	25	1.55		
73.70	14400	20	1.25		
82.91	16200	18	1.10		
93.19	18200	16	1.00		

50HP

4.92	1180	299	2.50	2	HR-107
10.13	2430	145	1.75		
15.65	3760	94	1.15		
5.15	1240	285	3.70	2	HR-137
10.79	2590	136	3.10		
14.51	3490	101	2.30		
19.04	4580	77	1.75		
24.12	5800	61	1.40		
20.44	4910	72	2.40	2	HR-147
24.19	5810	61	2.00	3	HR-147
29.95	7200	49	1.80		
35.64	8570	41	1.50		
40.29	9680	36	1.35		
27.96	6720	53	2.70	3	HR-167
34.41	8270	43	2.20		
39.92	9600	37	1.90		
44.87	10800	33	1.65		
51.76	12400	28	1.45		
58.65	14100	25	1.30		
67.40	16200	22	1.10		
73.70	17700	20	1.00		

60HP

4.92	1440	299	2.00	2	HR-107
10.13	2960	145	1.45		
15.65	4580	94	0.95		
5.15	1510	285	3.00	2	HR-137
10.79	3150	136	2.50		
14.51	4240	101	1.90		
19.04	5570	77	1.45		
24.12	7050	61	1.15		

ACTUAL RATIO	OUTPUT TORQUE N.M	OUTPUT (RPM)	S.F	STAGE	TYPE
--------------	-------------------	--------------	-----	-------	------

20.44	5970	72	2.00	2	HR-147
24.19	7070	61	1.70	3	HR-147
29.95	8760	49	1.50		
35.64	10400	41	1.25		
40.29	11800	36	1.10		
27.96	8170	53	2.20	3	HR-167
34.41	10100	43	1.80		
39.92	11700	37	1.55		
44.87	13100	33	1.35		
51.76	15100	28	1.20		
58.65	17100	25	1.05		

75HP

5.15	1830	286	2.50	2	HR-137
10.79	3840	137	2.10		
14.51	5170	102	1.55		
5.00	1809	296	4.90	2	HR-147
9.74	3470	151	3.80		
15.64	5570	94	2.30		
20.44	7280	72	1.65		
24.19	8610	61	1.40	3	HR-147
29.95	10700	49	1.20		
27.96	9960	53	1.80	3	HR-167
34.41	12300	43	1.45		
39.92	14200	37	1.25		
44.87	16000	33	1.15		

100HP

5.00	2420	296	3.60	2	HR-147
9.74	4710	152	2.80		
15.64	7570	95	1.70		
20.44	9890	72	1.20		
19.03	9210	78	1.75	2	HR-167
24.57	11900	60	1.20		
23.71	11500	62	1.55	3	HR-167
27.96	13500	53	1.35		
34.41	16700	43	1.10		

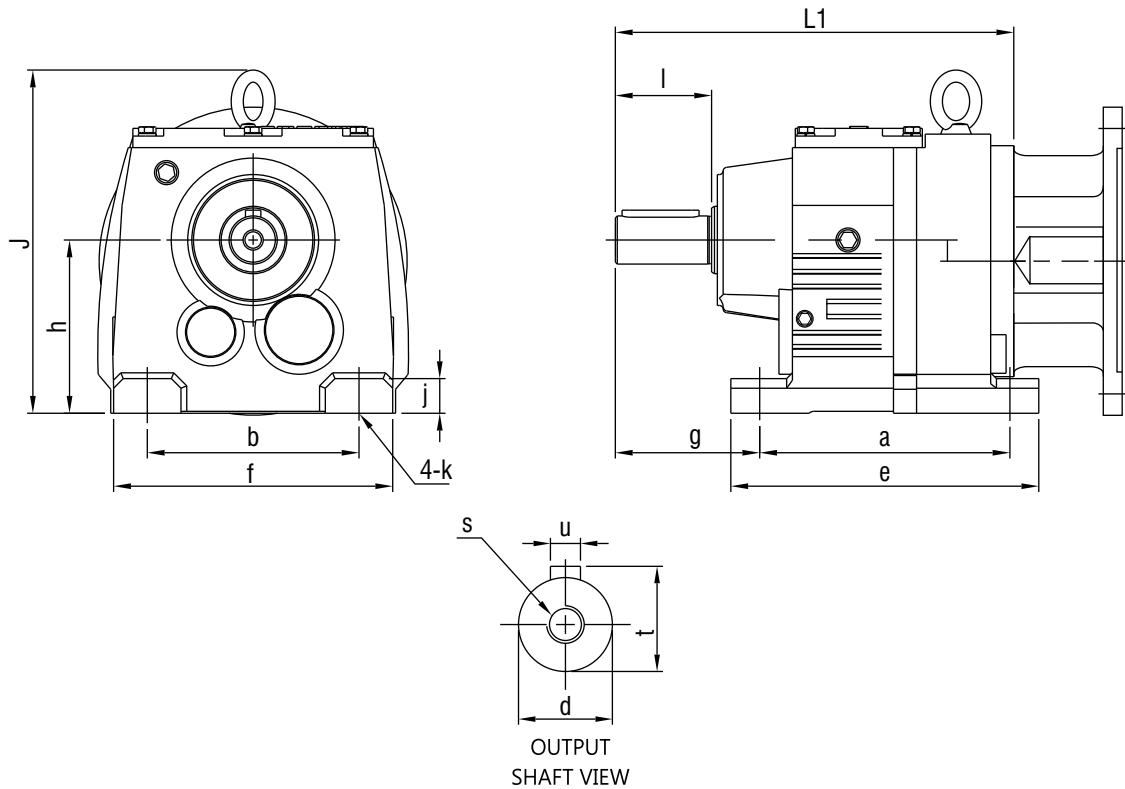
ACTUAL RATIO	OUTPUT TORQUE N.M	OUTPUT (RPM)	S.F	STAGE	TYPE
--------------	-------------------	--------------	-----	-------	------

125HP

5.00	2900	296	3.00	2	HR-147
9.74	5660	152	2.30		
15.64	9080	95	1.45		
10.24	5940	145	2.90	2	HR-167
14.48	8410	102	2.10		
19.03	11100	78	1.45		

150HP

10.24	7240	145	2.30	2	HR-167
14.48	10200	103	1.75		
19.03	13500	78	1.20		



Size	a	e	g	b	f	h	j	k	J	L1	Shaft Dimension				
											d	l	u	t	s
HR 37	130	160	75	110	145	90-05	18	9	-	201	25k6	50	8	28	M10
HR 47	165	195	90	135	170	115-05	24	13.5	-	235	30k6	60	8	33	M10
HR 57	165	200	100	135	190	115-05	24	13.5	-	257	35k6	70	10	38	M12
HR 67	195	235	100	150	210	130-05	30	14	243	280	35k6	70	10	38	M12
HR 77	205	245	115	170	230	140-05	30	17.5	269	300	40k6	80	12	43	M16
HR 87	260	310	140	215	290	180-05	45	17.5	345	372	50k6	100	14	53.5	M16
HR 97	310	365	160	250	340	225-05	55	22	418	440	60m6	120	16	64	M20
HR 107	370	440	185	290	400	250-05	65	26	475	490	70m6	140	20	74.5	M20
HR 137	410	490	220	340	450	315-1	70	33	562	580	90m6	170	25	95	M24
HR 147	500	590	250	380	530	335-1	80	39	637	690	110m6	210	28	116	M24
HR 167	580	670	270	500	660	425-1	100	39	749	790	120m6	210	32	127	M24

unit : mm

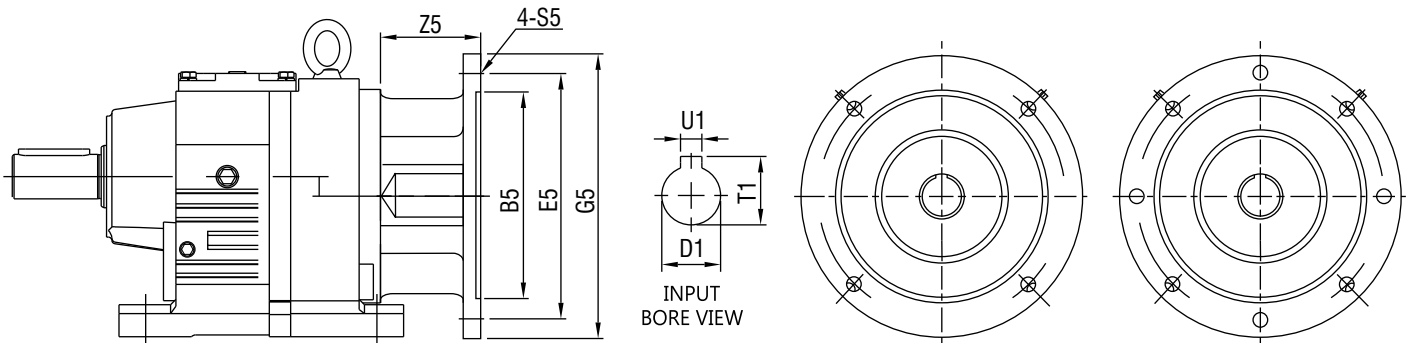
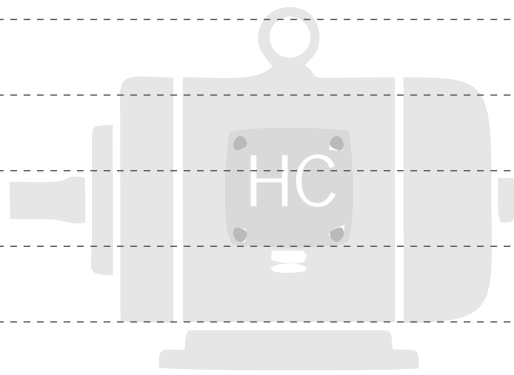


Fig. 1

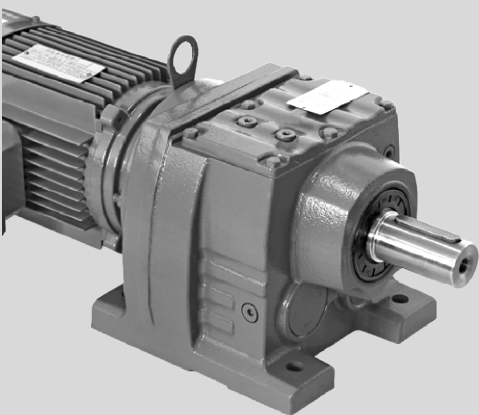
Fig. 2

FLANGE DIMENSION										
Size	MOTOR	Fig	B5	E5	G5	S5	Z5	D1	T1	U1
HR 37	F63	1	95	115	140	M8	50	11	12.8	4
	F71		110	130	160	M8	54	14	16.3	5
	F80		130	165	200	M10	69	19	21.8	6
	F90		130	165	200	M10	69	24	27.3	8
HR 47 HR 57 HR 67 HR 77	F63	1	95	115	140	M8	50	11	12.8	4
	F71		110	130	160	M8	54	14	16.3	5
	F80		130	165	200	M10	69	19	21.8	6
	F90		130	165	200	M10	69	24	27.3	8
	F100		180	215	250	M12	81	28	31.3	8
	F112		180	215	250	M12	81	28	31.3	8
	F132		230	265	300	M12	92	38	41.3	10
HR 87	F80	1	130	165	200	M10	69	19	21.8	6
	F90		130	165	200	M10	69	24	27.3	8
	F100		180	215	250	M12	81	28	31.3	8
	F112		180	215	250	M12	81	28	31.3	8
	F132		230	265	300	M12	92	38	41.3	10
	F160		250	300	350	M16	125	42	45.3	12
	F180		250	300	350	M16	125	48	51.8	14
HR 97 HR 107	F100	1	180	215	250	M12	81	28	31.3	8
	F112		180	215	250	M12	81	28	31.3	8
	F132		230	265	300	M12	92	38	41.3	10
	F160		250	300	350	M16	124	42	45.3	12
	F180		250	300	350	M16	124	48	51.8	14
	F200		300	350	400	M16	144	55	59.3	16
	F225	2	350	400	450	M16	159	60	64.4	18
HR 137 HR 147 HR 167	F132	1	230	265	300	M12	92	38	41.3	10
	F160		250	300	350	M16	124	42	45.3	12
	F180		250	300	350	M16	124	48	51.8	14
	F200		300	350	400	M16	144	55	59.3	16
	F225	2	350	400	450	M16	159	60	64.4	18
	F250		450	500	550	M16	180	65	69.4	18
	F280		450	500	550	M16	180	75	79.9	20

unit : mm



HANCO



HANCO Gear Reducer